



www.lanagrossa.com



COAT · LALA BERLIN FURRY
Design 01 from Filati Lookbook 07

© Lana Grossa GmbH - Photo: Wilfried Wulff, www.wilfriedwulff.com

COAT · LALA BERLIN FURRY

Design 01 from Filati Lookbook 07



www.lanagrossa.com

Size 36 (38/40, 42/44)

Instructions are given for first size. Figures in parenthesis refer to larger sizes. When only one figure is given, it applies to all sizes.

Materials: 500 (550 – 600) g of Lana Grossa **Lala Berlin Furry** (90% alpaca, 10% polyamide; 75 m/50 g) in Petrol Green (col 9). Size 8 and 10 mm needles; size 8 and 10 mm circular needles, each 40 cm long; size 7 mm crochet hook.

Rib patt: K2, p2.

St st: K on RS, p on WS.

Rev St st: P on RS, k on WS.

Two-stitch selvage: On RS row, k1, sl 1 pwise wyib, patt to last 2 sts, sl 1 pwise wyib, k1. On WS row, sl 1 pwise wyif, p1, patt to last 2 sts, p1, sl 1 pwise wyif.

Full-fashion dec A [side and armhole shaping]: On RS row, selvage st, 6 sts in St st, skp, patt to last 9 sts, k2tog, 6 sts in St st, selvage st.

Full-fashion dec B [sleeve cap shaping]: On RS row, selvage st, k1, skp, patt to last 4 sts, k2tog, k1, selvage st.

Gauge: 7.5 sts and 10 rows = 10 x 10 cm in St st on size 10 mm needles.

Back: With size 8 mm needles cast on 42 (46, 50) sts. Next row (WS): Selvage st, p1, * k2, p2; rep from * to last 4 sts, k2, p1, selvage st. Cont in rib patt as established until piece meas 7 cm from cast-on, ending with a WS row. Change to size 10 mm needles. Next row (RS): Work in St st, inc 1 st at center of row = 43 (47, 51) sts. Cont in St st and shape sides as foll: Working full-fashion dec A, dec 1 st at each end of 35th row worked in St st, then every 32nd row once more = 39 (43, 47) sts. Work even until piece meas 92 cm from cast-on, ending with a WS row. Shape armholes: Bind off 2 sts at beg of next 2 rows. Working full-fashion dec A, dec 1 st at each end of next RS row = 33 (37, 41) sts. Work even until piece meas 117 (119, 121) cm from cast-on, ending with a WS row. Shape shoulders: Bind off 5 (6, 7) sts at beg of next 4 rows. Bind off rem 13 sts.

Pocket lining: Make 2 alike. With size 10 mm needles cast on 10 sts. Work in St st for 14 cm, ending with a RS row. Place sts on holder, cut yarn.

Left front: With size 8 mm needles cast on 25 (25, 29) sts. Next row (WS): Selvage st, p1, * k2, p2; rep from * to last 2 sts, k1, selvage st. Cont in rib patt as established until piece meas 7 cm from cast-on, ending with a WS row. Change to size 10 mm needles. Next row (RS): Selvage st, 19 (19, 23) sts in St st and at same time, inc 1 (3, 1) st(s), 2 sts in rev St st, 1 st in St st, two-stitch selvage = 26 (28, 30) sts. Cont in patt as established and shape side as foll: Working full-fashion dec A, dec 1 st at beg of 35th row from end of rib patt, then every 32nd row

once more = 24 (26, 28) sts. At same time, when piece meas 52 cm from cast-on, work pocket trim as foll: Next row (RS): Patt over 5 (6, 7) sts, rib patt over 10 sts, patt to end. Cont in patt as established until pocket trim meas 4 cm, ending with a WS row. Next row (RS): Patt over 5 (6, 7) sts, bind off 10 sts for pocket opening, patt to end. Next row (WS): Patt to bound-off sts, then with WS of pocket lining facing, patt across pocket lining sts on holder, patt to end. Cont in patt as established across all sts until piece meas 91 (92, 92) cm from cast-on, ending with a WS row. **For size 36 only:** Shape lapel: Next inc row (RS): Work to last 5 sts, M1L, work to end. Cont in patt, rep inc row every 4th row once, then every 6th row twice. Work increased sts in rev St st. At same time, when piece meas 92 cm from cast-on, shape armhole as foll: Bind off 2 sts at beg of next RS row. Working full-fashion dec A, dec 1 st at beg of next RS row = 25 sts after lapel and armhole shaping are complete. **For size 38/40 only:** Shape armhole: Bind off 2 sts at beg of next RS row. Working full-fashion dec A, dec 1 st at beg of next RS row. At same time, when piece meas 93 cm from cast-on shape lapel as foll: Next inc row (RS): Work to last 5 sts, M1L, work to end. Cont in patt, rep inc row every 4th row once, then every 6th row twice. Work increased sts in rev St st = 28 sts after lapel and armhole shaping are complete. **For size 42/44 only:** Shape armhole: Bind off 2 sts at beg of next RS row. Working full-fashion dec A, dec 1 st at beg of next RS row. At same time, when piece meas 95 cm from cast-on shape lapel as foll: Next inc row (RS): Work to last 5 sts, M1L, work to end. Cont in patt, rep inc row every 4th row once, then every 6th row twice. Work increased sts in rev St st = 30 sts after lapel and armhole shaping are complete. **For all sizes:** Work even until piece meas 112 (114, 116) cm from cast, ending with a RS row. Shape neck: At beg of WS rows, bind off 11 sts once, 2 sts twice = 10 (12, 14) sts. At same time, when piece meas 117 (119, 121) cm from cast-on, shape shoulder as foll: At beg of RS rows, bind off 5 (6, 7) sts twice. No sts rem.

Right front: Work same as left front, reversing all shaping and patt placement.

Sleeves: With size 8 mm needles cast on 22 sts. Next row (WS): Selvage st, p1, * k2, p2; rep from * to last 4 sts, k2, p1, selvage st. Cont in rib patt as established until piece meas 6 cm from cast-on, ending with a WS row. Change to size 10 mm needles. Work in St st and shape sleeve as foll: Inc 1 st at each end of 11 (9, 7)th row, then every 10th row once, then every 8th row once (then every 8th row once, then every 6th row 3 times / then every 6th row 5 times) = 28 (32, 34) sts. Work even until piece meas 43 (45, 47) cm from cast-on, ending with a WS row. Shape sleeve cap: Bind off 2 sts at beg of next 4 rows. Working full-fashion dec B, dec 1 st at each end of next 6 RS rows. Work 1 WS row. Bind off rem 8 (12, 14) sts.

Belt: With size 8 mm needles cast on 8 sts. Next row (RS): Two-stitch selvage, k1, p2, k1, two-stitch selvage. Maintaining two-stitch selvage at each edge and working rem sts as they appear, work even until piece meas 245 cm from cast-on. Bind off all sts.

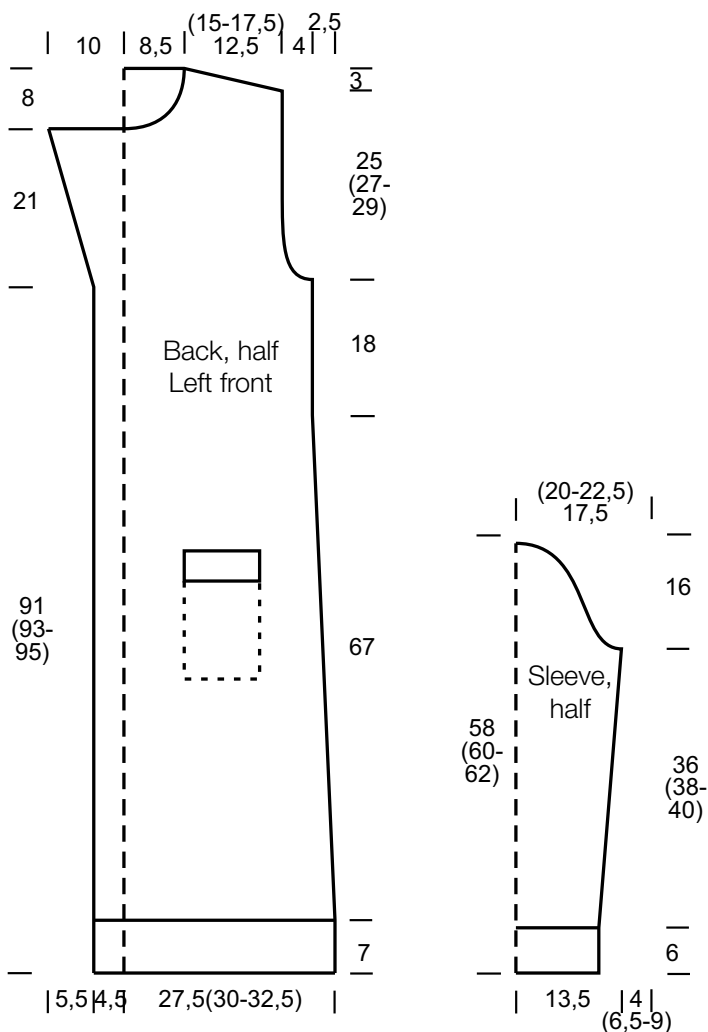
COAT · LALA BERLIN FURRY

Design 01 from Filati Lookbook 07



www.lanagrossa.com

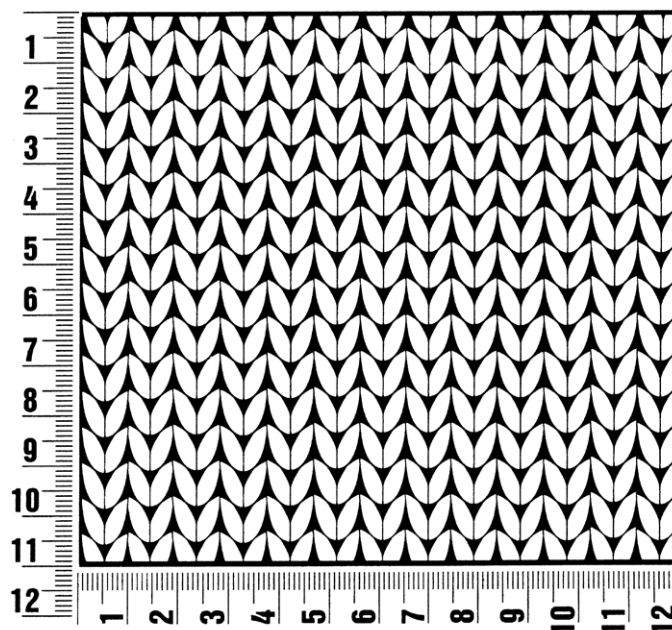
Finishing: Pin pieces to measurements and block. Sew pocket linings in place. Sew shoulder seams. **Collar:** With size 8 mm circular needle, beginning 9 sts in from right front neck edge and ending 9 sts in from left front neck edge, pick up and k 52 sts evenly along right front, back and left front neck edge. Next row (WS): Two-stitch selvage, work in rib patt to last 2 sts, two-stitch selvage. Work 2 more rows in patt as established. Change to size 10 mm circular needle. Cont in patt as established until collar meas 9 cm from pick-up row. Loosely bind off all sts in rib. Sew half of short collar edge to left and right neck edge. Sew in sleeves. Sew side and sleeve seams. **Belt loops:** With size 7 mm crochet hook, attach yarn to left side seam, approx. 74 cm up from bottom edge. Ch 6 and attach 6 cm up. Rep at right side seam.



Gauge Swatch

Before you begin ...

...make a gauge swatch. Use the recommended needles, yarns and pattern stitch for your gauge swatch. It should measure approx. 12 cm x 12 cm. Cast-on and bind-off rows, as well as selvage stitches should not be included in the measurement. Pin your swatch and block it as you would the finished pieces of the garment. Count stitches and rows over 10 cm. If your gauge swatch is too small, switch to larger needles. If your gauge swatch is too big, switch to smaller needles.



Abbreviations

beg = begin(ning) · **ch** = chain · **cont** = continue · **dec** = decreas(e)(ing) · **inc** = increas(e)(ing) · **k** = knit · **kwise** = as if to knit
meas = measures · **M1L** = lift strand between sts from front to back and knit this strand through the back loop · **M1R** = lift strand between sts from the back and knit this strand through the front loop · **patt** = pattern · **pm** = place marker · **p** = purl
pwise = as if to purl · **rem** = remain(ing) · **rep** = repeat(s) · **rev St st** = reverse stockinette stitch · **rnd(s)** = round(s) · **RS** = right side · **sc** = single crochet · **skp** = slip 1 stitch as if to knit, knit 1 stitch, pass slipped stitch over knitted stitch · **sk2p** = slip 1 stitch as if to knit, knit 2 together, pass slipped stitch over knitted stitch · **s2kp** = slip 2 stitches as if to knit, k 1 stitch, pass slipped stitches over knitted stitch · **sl** = slip · **st(s)** = stitch(es) · **St st** = stockinette stitch · **tbl** = through the back loop · **tog** = together · **wyib** = with yarn in back of work · **wyif** = with yarn in front of work · **WS** = wrong side · **yo(s)** = yarn over(s)

Publisher's Info

Publisher: Lana Grossa GmbH, Gaimersheim, www.lanagrossa.com

Photographer: Wilfried Wulff, www.wilfriedwulff.com